

The Association of Fundraising Professionals

Rhode Island Chapter



NATIONAL PHILANTHROPY DAY

Changing Rhode Island With A Giving Heart

Friday,
November 16, 2018



Breakfast &
Awards Ceremony
Rhodes on the Pawtuxet
Cranston, RI

Proud to support
National Philanthropy Day



Helpfulness
Insured®

866-51-Amica (26422)
Amica.com

Amica Mutual Insurance Company, Lincoln, Rhode Island

A Message from the Chairs of National Philanthropy Day 2018

Welcome and thank you for joining us for the Association of Fundraising Professionals, Rhode Island Chapter's (AFP-RI) 2018 National Philanthropy Day Celebration. AFP-RI is a volunteer organization dedicated to elevating the fundraising profession by providing valuable educational programming to improve the skills of fundraising professionals in the state. Each year we bring together non-profits, donors, volunteers and corporate partners to recognize the importance and spirit of philanthropy.

On National Philanthropy Day, we take the time to recognize and celebrate the people and companies who have given so generously of themselves to enrich our state, our cities, and our towns. Like so many of you – they've shared their time, compassion and resources freely and have made a profound impact on promoting and preserving our community's collective spirit of generosity. The Rhode Island community is better because of you - you are indeed changing Rhode Island with a giving heart.



Katie McGwin and Vernell Clouden
2018 Co-Chairs

We are incredibly grateful to our sponsors – returning and new – participating in this year's National Philanthropy Day; your support is what makes this event possible. We are eternally grateful to the many non-profits who participate and honor so many of their wonderful Partners in Philanthropy. We are inspired by the stories of impact these individuals, organizations, and companies have on your organizations. National Philanthropy Day would also not be possible without a team of leaders who serve as committee members and volunteers, our deepest appreciation to each of you for your commitment and hard work.

Congratulations again to all those being honored – today is for you! Enjoy breakfast, time together with friends old and new, and most of all, celebrating National Philanthropy Day!

Best Regards,
Katie McGwin and Vernell Clouden
2018 Co-Chairs

National Philanthropy Day 2018 is Sponsored by:

Presenting
Sponsor

Amica Companies
FOUNDATION

Silver
Sponsor



RHODE ISLAND
FOUNDATION

Bronze
Sponsors

Blue Cross Blue Shield of RI
Blum Shapiro

Media
Sponsors



Rhode Island
MONTHLY



Supporters

BankNewport
The Clafin Company
Delta Dental of RI

Sponsors current on date of printing.

National Philanthropy Day 2018

Friend Sponsors

Audubon Society of Rhode Island
Boys & Girls Club of Pawtucket
Bridgewater State University
CCRI Foundation and Alumni Association
Children's Friend
Brain Injury Association of Rhode Island
The Episcopal Charities Fund of Rhode Island
Friends of Simone
Girl Scouts of Southeastern New England
Highlander Charter School
Hope Hospice & Palliative Care
Island Moving Company
Moses Brown School
The Potter League for Animals
Providence Children's Museum
Providence Performing Arts Center
ReFocus, Inc.*
Rhode Island College Foundation
Rhode Island Community Food Bank
RIVMA Companion Animal Foundation (CAF)
Ronald McDonald House of Providence
Saint Elizabeth Community
Save The Bay
Sisters of Mercy Northeast Community
The Tomorrow Fund
UMass Dartmouth
University of Rhode Island Foundation
YMCA of Greater Providence

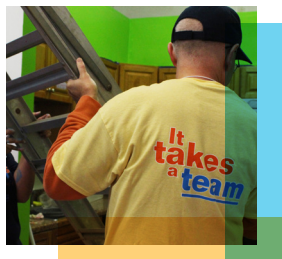
*Super Friend with 2 Tables!

**See what
needs to
be done
and do it.**

*To invest in Rhode Island
with us, contact Jim Sanzi,
Senior Vice President of
Development at
jsanzi@rifoundation.org
or 401-427-4025.
To learn more about our
work, visit our website.*



**RHODE ISLAND
FOUNDATION**



When our community succeeds, we succeed.

Every year our employees team up and work hand-in-hand with dozens of Rhode Island organizations to help them achieve their goals.

**Congratulations to the 2018 National Philanthropy Day honorees
and partners in philanthropy!**



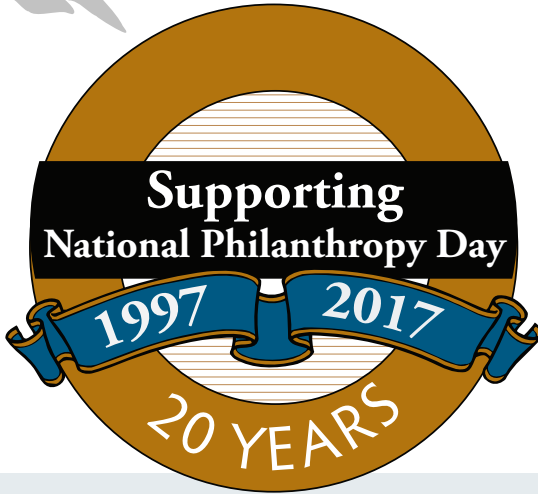
Blue Cross & Blue Shield of Rhode Island is an independent licensee of the Blue Cross and Blue Shield Association.

Contents

A Message from the Co-Chairs of National Philanthropy Day 2018 Vernell Clouden and Katie McGwin	2
Sponsors	3-4
Program	8
2018 Outstanding Philanthropic Award Recipients	
Outstanding Philanthropic Corporation New England Laborers’ Tri-Funds	10
Outstanding Philanthropic Business Newport Tent Company	11
Outstanding Philanthropic Citizen Dr. Joseph Chazan	12
Herbert E. Kaplan Youth in Philanthropy Scholarship Chloe Moss, East Greenwich High School	13
Special Recognition AFP 2019 Distinguished Fellow Award Simone Joyaux, ACFRE, Adv Dip	14
2018 Partners in Philanthropy	16 - 32
National Philanthropy Day 2018 Committees	33
Membership to the Association of Fundraising Professionals	34
AFP, RI Chapter Board of Directors	35
National Philanthropy Day Past Awards	36



Harpowell House, Inc.
Craftsmen in stone since 1960



FOR FIFTY YEARS HARPSWELL HOUSE

has been crafting unique and distinctive products from natural materials. Today we continue this tradition by producing some of the highest quality recognition products and gifts in the world from domestic slate.

Recognize your meritorious donors, employees, and other contributors with the highest quality recognition awards and gifts available. The same awards and gifts that have been bestowed upon the likes of Princess Diana, Mijail Gorbachov (Mikhail Gorbachev), President Bill Clinton, Michael Jordan, and many, many others.

PO Box 305, Topsham, Maine 04086
207-353-2385 www.harpowellhouse.com



Program

Opening Greetings

Vernell Clouden and Katie McGwin, Co-Chairs

Welcome

Meredith Gregory, AMICA Foundation

2018 Award Presentations

Outstanding Philanthropic Corporation
New England Laborers' Tri-Funds

Outstanding Philanthropic Business
Newport Tent Company

Outstanding Philanthropic Citizen
Dr. Joseph Chazan

Message from Chapter President

Christine Pellegrini, MPA, CFRE, AFP-RI Board President

Recognition of AFP 2019 Distinguished Fellow Award
Simone Joyaux, ACFRE, Adv Dip

Herbert E. Kaplan Youth in Philanthropy Scholarship
Chloe Moss
East Greenwich High School

Presentation of Partners in Philanthropy

Closing



With decades of experience serving New England and a team of accounting, tax and business consulting experts, we provide you with hands-on partnering you can only get from an experienced and local business advisor. Your goals become our goals. We not only see your vision, we help you achieve it.

BlumShapiro

Accounting | Tax | Business Consulting

The Passion to Unlock Potential

Rhode Island
Connecticut
Massachusetts

401.272.5600
blumshapiro.com

YOU

can help create tomorrow's
philanthropic leaders

Several ways to make a gift **TODAY:**

1 PUT A CASH GIFT into the box in the center of the table

2 SCAN THIS QR CODE
to be directed to a secure site



3 MAIL A CHECK TO:

AFP-RI c/o Pat McAssey, BlumShapiro, One Capital Way,
Cranston, RI 02910

Thank you for supporting the Herb Kaplan
Youth in Philanthropy Scholarship Fund and promoting the
next generation of Rhode Island's philanthropic leaders!

Outstanding Philanthropic Corporation

New England Laborers' Tri-Funds

Nominated by: YMCA of Greater Providence

Under the leadership of Armand E. Sabitoni, General Secretary-Treasurer and New England Regional Manager of the Laborers' International Union of North America (LIUNA), The New England Laborers' Tri-Funds, an affiliate of LIUNA, has a well-established history of involvement in child and family focused organizations in Rhode Island.

For over two years, the New England Laborers' Tri-Funds have been a supporter of the YMCA of Greater Providence (GPYMCA). Through event sponsorship, the New England Laborers' Tri-Funds have helped fund the GPYMCA's memberships and summer camperships offered to families and children in need. Additionally, the union has provided volunteers to assist with projects at the various Branches and Camp Fuller. Last April they also created a "Big Light Switch" that was used as a prop in photos when the State House Dome was illuminated in Y logo colors during Y Heroes week.

The Laborers' Union has also established unique connections with local high schools and trade programs. They fully support several apprentice training programs that encourage students interested in pursuing



NEW ENGLAND LABORERS'
TRI-FUNDS

a career within the trade to acquire the necessary training and certification. The Laborers' Union partnered with the Cranston Public School District to open the first charter school for grades 9-12 with a focus on careers in construction.

Earlier this year, the New England Laborers constructed and donated a new concession stand at Lajoie Field for the Woonsocket Little League. The Union is also proud to support the Make-A-Wish Foundation, Big Brothers Big Sisters of the Ocean State, The Tomorrow Fund, Boys and Girls Clubs in Rhode Island, The United Way and The American Heart Association.

It is evident through their philanthropy that investing in our local youth is an important priority for LIUNA. With the New England Laborers' Union support, organizations from across the state are providing children and families in need with the services that make their lives better today and into the future.

Outstanding Philanthropic Business

Newport Tent Company

Nominated by: The Potter League for Animals

Newport Tent Company has been servicing the Rhode Island community for more than 45 years, and its owner Bill Corcoran appreciates the positive impact area non-profits have on our state.

Bill and his team understand the important role fundraising events play for non-profits. A tent may seem to fade into the background of an event, but without it any outdoor event cannot happen. No one understands that better than the staff at Newport Tent Company.

Non-profits represent a large portion of the tent company's business. The Newport Tent business model is framed in such a way that allows it to work within each organizations' means. To achieve this goal, they often sponsor events and provide discounts to a wide array of charities, including the Potter League for Animals, Norman Bird Sanctuary and the Aquidneck Island Land Trust.

Every weekend, especially in the summer months in Newport County, Newport Tent Company is working with three or four different charities. Despite offering their



services at a discounted rate, the Newport Tent staff offers the most professional and timely service. The entire team takes pride in knowing that their efforts help so many non-profits do good work.

In addition to event support, the office staff at Newport Tent Company hold monthly dress down days from which a collection of funds is given to various non-profits. And over the years, Bill Corcoran, has donned his auctioneer hat and been emcee for a number of fundraising events.

Bill Corcoran and the rest of the team at the Newport Tent Company are committed to helping non-profits hold successful events, raise vital funds and achieve their missions which make Rhode Island a better place to live.

Outstanding Philanthropic Citizen

Dr. Joseph Chazan

Nominated by: WaterFire Providence

Joseph A. Chazan, M.D., Providence resident since 1967, has been committed to local philanthropy since the 1970's. Dr. Chazan grew up in Buffalo, New York, attending schools there through graduation from the University of Buffalo School of Medicine.



After completing his training in Boston, Dr. Chazan joined the Brown University School of Medicine where he initiated the kidney dialysis program at Rhode Island Hospital. Today, he oversees twelve clinics offering dialysis services. Brown University named Dr. Chazan a clinical professor of medicine emeritus in 2009.

His earliest engagements with philanthropy were in support of the RISD Museum and of AS220. Dr. Chazan and his late wife, Helene, began collecting art in 1973, eventually donating more than 600 objects to the RISD Museum where he serves on the Board of Governors. At AS220, he was an early contributor toward the construction of AS220's first permanent home and commissioned objects remaining there today.

WaterFire Providence has also benefited from Dr. Chazan's involvement, advice and support over the past twenty years. His leadership gift toward construction of the new WaterFire Arts Center helped the organization create a headquarters, production complex, and multi-purpose arts venue as well as a social

enterprise platform with the goal of strengthening its long-term financial sustainability.

Dr. Chazan has provided significant support to the Newport Art Museum, Southside Community Land Trust, Farm Fresh Rhode Island, the Providence Preservation Society, the

Providence Athenaeum and the Providence Public Library. The Chazan Family Gallery at RIC and the Wheeler School's Chazan Gallery recognize his contributions to the arts at those institutions. Dr. Chazan is a past RISCA chairman and a past president of Temple Beth-El in Providence.

Since 2005, Dr. Chazan has focused on promoting the contemporary work of Rhode Island artists. From 2008-2016, his NetWorks project profiled more than 100 accomplished Rhode Island artists through catalogues, gallery exhibits, video profiles and events. Representation has been among Dr. Chazan's priorities throughout his decades of supporting the arts. He has long commissioned people of color, women, and members of the LGBTQ+ community, excluding no one so long as quality merits. Many of the artworks he has donated highlight social issues and race relations. In 2013, the Trinity Repertory Company bestowed on Dr. Chazan its Pell Award for Outstanding Leadership in the Arts.

Herbert E. Kaplan Youth in Philanthropy Scholarship

Chloe Moss, East Greenwich High School

Chloe Moss is always looking for ways to envelop herself in an important cause. Throughout her high school career, not only has she taken part in many fundraising initiatives, but she's even started a few of her own.

Since her freshman year of high school, Chloe has dedicated time to raising money for organizations that assist individuals fighting cancer. She helped organize East Greenwich's first ever Relay For Life to benefit the American Cancer Society. This event was held for two years, during both of which Chloe served as co-chair.

In 2016, Chloe helped organize the first annual East Greenwich High School (EGHS) Lady Avengers Basketball Team Pink-Out fundraiser and game. The goal of this event was to provide community support for a former EGHS women's basketball player who was diagnosed with breast cancer. Chloe and her teammates sold Pink-Out T-shirts, held raffles and coordinated a bake sale. Funds are donated to the Breast Health Center at Kent Hospital/Women in Need program which helps those diagnosed with cancer facing financial difficulties. In recognition for their charitable efforts, the Lady Avengers Basketball team was selected as a Showcase Cinema High School Team of the Week for two years in a row.

Chloe co-founded the East Greenwich Water Project which raised funds to build a clean water well in a Kenyan Village. She and her co-founder sought out the Rotary Club of



East Greenwich for guidance. Once teamed up with the Rotary, the group sold bracelets and collected donations at local town events to raise money for The Water Project, which provides help to African communities suffering from a lack of access to clean water and proper sanitation.

By spending so much time volunteering and fundraising, Chloe has realized that it is not how much money is raised for the cause but it's about the smiles she sees on the faces of those being helped.

Special Recognition

AFP 2019 Distinguished Fellow Award

Simone Joyaux, ACFRE, Adv Dip

Simone P. Joyaux, ACFRE, Adv Dip is a recipient of AFP International's 2019 Distinguished Fellow Award, one of the highest fundraising honors, awarded to a select few of the profession's foremost leaders.

AFP-RI is so proud to honor Simone, who has dedicated herself to the practice of ethical and effective fundraising for more than 40 years, educating and mentoring other fundraising professionals and elevating the fundraising profession through her scholarship and leadership.

Simone is recognized internationally as a leader in the fields of fund development and nonprofit management and her credentials and breadth of experience are awe-inspiring. She has earned the International Advanced Diploma in Fundraising (Adv Dip) AND the Advanced Certified Fundraising Executive (ACFRE). Simone serves as an adjunct faculty member in the masters program in Philanthropy and Development at Saint Mary's University of Minnesota and she has developed and presented training programs, workshops, plenary, and keynote addresses worldwide. In addition to authoring three books, Simone is a popular columnist and blogger. For the past 31 years she has built a highly successful consulting business, Joyaux Associates, helping nonprofits in various countries enhance their capacity and capability to make change.

Most importantly, Simone shares her knowledge and expertise generously and graciously. She has mentored and coached hundreds of fundraising professionals from the young professional new to the field to the experienced practitioner – all can and have benefited from Simone's expertise and encouragement.



For Simone, philanthropy has been more than just a career – it is her life's work. She gives generously of her time, talent and treasure. Simone volunteers an average of 10 hours per week while working full time. She and her life partner contribute at least 10% of their income to charity annually and have bequeathed their entire estate to charity.

Rhode Island has benefitted enormously from Simone's talent and generosity. Simone served as the Chief Development Officer at Trinity Repertory Theatre from 1981-1988 and she is a past Chair of Planned Parenthood of Southern New England. As a consultant, she has advised countless Rhode Island nonprofits. As a volunteer, Simone founded the Women's Fund of Rhode Island and the first version of a statewide arts advocacy organization. She is also a founder of the AFP Rhode Island Chapter and continues to be one of our most generous and passionate supporters.

Simone is a Rhode Island treasure!

PROVIDENCE BUSINESS NEWS

PBN

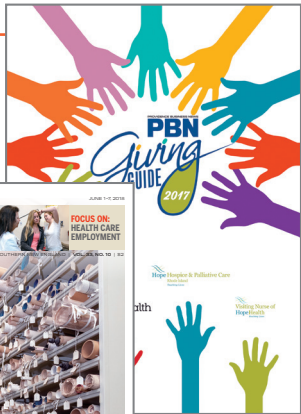
*is proud to support
National Philanthropy Day
and applaud the 2018 honorees.*

**SUBSCRIBE TODAY
& RECEIVE**

**52 WEEKS
FOR \$52**

Includes full online
access, regularly \$99.

**Visit PBN.com or
call 855.813.5805
and use promo
code AFP18.**



PBN
Nonprofit & Education
Friday, September 21, 2018

PBN BOOKLISTS 2018 Put 12 months of exposure to work for your company. **RESERVE EARLY!**

Brown professor to use \$150K ACLS grant for archaeological survey
PROVIDENCE – Brown University assistant professor of anthropology Parker VanValkenburgh, along with his colleagues, was awarded a \$150,000 American Council of Learned Societies grant to develop a digital platform for an archaeological survey in the Andes Mountain range in Peru, according to a late August release from the Ivy League school.

Five Questions With: Azeesa Hasan
Azeesa Hasan is a junior at Brown University concentrating in applied math. At Brown, she provides...

Whaling museum curator's book nominated for national award
NEW BEDFORD – "O for the Wide and Trustless Seas: Original Art of the Yankee Whale Hunt," written by...

RWI's Donnell wins \$18K ESL grant
PROVIDENCE – The R.I. Department of Education awarded a \$15,000 grant to Kelly Donnell, a professor...



plus
**Sign up for our
nonprofit e-newsletter,
delivered every Friday
to your inbox.**
Visit PBN.com/email.

YOUR #1 RESOURCE FOR LOCAL BUSINESS NEWS
PROVIDENCE BUSINESS NEWS
855-813-5805 | PBN.COM

2018 Partners in Philanthropy

ADOPTION RI



Lise Iwon

Lise Iwon, a former lawyer and court-appointed special advocate for children, has been working with Adoption Rhode Island for the past three years. Lise launched the Duffle Bag Bash to prevent children moving from one placement to another using a garbage bag. Since 2016, over 2,000 duffle bags and backpacks have been given to children in foster care. Now, during a difficult time in their lives, at least they don't have to feel like they are being treated like garbage.

Beyond the Duffle Bag Bash, Lise has become a strong voice in the community for our kids and we are so grateful that our kids have such an amazing person in their corner. ♥

AUDUBON SOCIETY



Lelia Palmieri

Lelia Palmieri is as bright and colorful as the rose gardens she supports with her philanthropy. Upon moving to Rhode Island with her late husband Vivian "Jerry" Palmieri, Lelia has shared their love of roses, birds, and nature with Audubon. With her support, Audubon added its first outdoor exhibit, a rose-pollinator garden, at Audubon's Nature Center and Aquarium in Bristol. Here, thousands of visitors will now see and learn about pollinator species of bees, insects, and birds in their

habitat, and learn how to protect them. The garden even includes a pollinator "hotel" ... called Buggingham Palace! ♥



BECKER COLLEGE

Johanna Hussey

Johanna Hussey, Class of 2000 and 2011, served as the president of the Becker College Alumni Association for eight years until 2016 and continues to serve as past president. Becker College, located in Worcester and Leicester, MA, has over 22,000 living alumni, with 600 graduates and 36 current students calling Rhode Island home. Johanna represented the Becker College Alumni Association as a graduate

while attending as a student pursuing a bachelor's degree in Business Management. She used her unique role as a student and alumna to engage her classmates in the Becker experience, designing the Alumni Association Giving Tree. Each leaf inscribed with a donor name graces the Alumni Bridge at the Fuller Campus Center, visually representing alumni support for current Becker students. ♥



RHODE ISLAND PHILANTHROPIC events calendar



only at RIMonthly.com

The 2019 Rhode Island Philanthropic Events Calendar is a list of charitable events featured on the home page of RIMonthly.com. This is a FREE resource available to help promote your fundraiser to our readers (through a monthly ad in *Rhode Island Monthly*, our weekly events newsletter, and visitors to our site.) You may list as many events as you'd like with photos, event details and ticket information.

Enter your event today at RIMonthly.com

Rhode Island
MONTHLY

Know more. Live better.

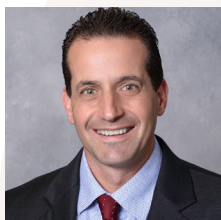
Presenting Sponsor:

 **Citizens Bank**[®]

Interested in becoming a calendar sponsor?
Email kkeating@rimonthly.com for more information.

2018 Partners in Philanthropy

BOYS & GIRLS CLUB OF PAWTUCKET



Daniel Gamm

It is an honor to publicly recognize and thank Dan Gamm for his incredible commitment to our members. For nearly a decade, Dan and his team at Mariner Private Wealth Management (a private wealth advisory practice of Ameriprise Financial Services, Inc.) have volunteered annually – staff, families, and clients alike – to assemble 250 Thanksgiving meals for our kids and their families. Additionally, Dan has been a tremendous advocate for the Club, helping to secure funding from the Ameriprise Foundation in support of our Arts programs. Dan's commitment to the Boys & Girls Club of Pawtucket and compassion for our members is building better futures for thousands of kids. From the bottom of our hearts, we thank you Dan! ♥

BRAIN INJURY ASSOCIATION OF RHODE ISLAND



Colleen McCarthy

The Brain Injury Association of Rhode Island is proud to honor Colleen McCarthy as our 2018 Partner in Philanthropy. As Vice President of the BIARI Board of Directors, Colleen is a long-time donor and volunteer. Colleen has helped steward the Association and continues to be an outstanding ambassador. Colleen is a strong and loyal supporter of BIARI's philanthropic efforts, participating in BIARI's events and activities. Colleen's dedication to our mission helps us continue providing important services to all Rhode Islanders. We are truly appreciative of and inspired by the enthusiasm, generosity and commitment of our philanthropic partner, Colleen McCarthy. Thank you Colleen, and congratulations! ♥

BRIDGEWATER STATE UNIVERSITY



Dr. Peter Sietins

Dr. Peter Sietins, '76, is a professor of Management at BSU, and graduate chairperson of the MBA program. Peter leads by example both inside and outside the classroom. He is a tireless advocate for students, encouraging them to ask the right questions, seek the best solutions, and driving them to excel. As one of BSU's first Employee Giving co-chairs nearly two decades ago, Peter has increased philanthropic visibility among his peers and his generosity has remained steadfast. Recently, Peter established a scholarship fund in the name of his former colleague, Dorothy Mulcahy. We thank Peter for demonstrating what it means for a community to care for its members and we are proud to call him a BSU alumnus. ♥

Thank You.

As Rhode Island's only public television station,
we are your stage for
local people, places, events, and history
- all those local voices -
that might not otherwise be heard or remembered.

Sometimes, the voices are not so local.
Sometimes, they come from as far as the U.K.
Every Tuesday night.

Today, we thank

Mary Ann and Walter Slocomb

who express their special affection for British comedies
through generous and loyal support for Rhode Island PBS.
Their philanthropy helps us fulfill our mission and, together,
we bring joy and laughter to the entire community.
Thank you.



Join us for Britcom Tuesday!

Digital 36.1 | Cox 1008HD | Verizon FiOS 508HD
Comcast 819HD | Verizon FiOS 518HD
DirecTV 36 | Dish Network 36


Rhode Island PBS 
ripbs.org

2018 Partners in Philanthropy

CHILDREN'S FRIEND



Collette

Children's Friend honors Collette for their long history of investing in Rhode Island children. With their many years of volunteer service to the Holiday Drive, Collette has been a generous and committed partner over the last 20 years for many Children's Friend projects. Most recently, Collette has invested significantly in the launch of our Culturally and Linguistically Responsive Classroom project, which has become a model for our classrooms across our agency. Collette is a global partner, supporting projects both locally and internationally through their Collette Cares program, encouraging philanthropy and volunteerism in Rhode Island and beyond. ♥

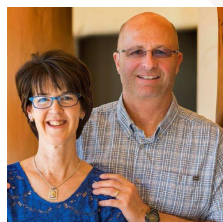
COMMUNITY CARE ALLIANCE



Nancy Benoit

Community Care Alliance is fortunate to have dynamic, long-time supporter, and believer in our mission, Nancy Benoit. Nancy, a former state representative and teacher, has served on our Board of Directors for 28 years, with many of those as an officer. Her love for Woonsocket is apparent in the many hours she devotes to advocacy for child welfare, daycare, housing and poverty, as well as her ardent participation in community events and activities. She also serves on the Boards of NeighborWorks Blackstone River Valley and Woonsocket Head Start and Child Development, and volunteers weekly at the food pantry at her parish, Holy Trinity. This community is that much "richer" for the dedication of time, expertise and treasure that Nancy Benoit has devoted to her hometown. ♥

COMMUNITY COLLEGE OF RHODE ISLAND

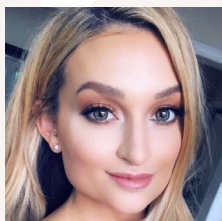


Linda and Dale Vandevrede

Linda and Dale's hopes are that their annual contributions to her father's scholarship, the A.C. Bessette Scholarship, will raise the award amount for each recipient. They are happy to support the efforts of CCRI students who have exemplified academic excellence and good citizenship, and hope that these students go on to contribute to their communities and distinguish themselves as proud alumni. Linda and Dale are also members of our John H. Chafee Society, which is our planned giving society. ♥

2018 Partners in Philanthropy

COMMUNITY COLLEGE OF RHODE ISLAND



Madison Gurka

Madison is a 2013 graduate of CCRI and has a very inspiring story. For the last five years, Madison and her family members have held annual fundraisers to establish an endowed scholarship in memory of her mother, Patricia Gurka, also a CCRI graduate. Madison and her family aim to provide tuition assistance to CCRI students studying Nursing through the Patricia Gurka Memorial Scholarship. ♥

ECONOMIC PROGRESS INSTITUTE

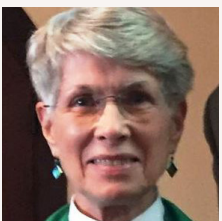


Lisa Roth Blackman

The Economic Progress Institute is proud to honor an exemplary board member, Lisa Roth Blackman. Lisa has served on the Institute's Board since 2009, serving two terms as Board Chair while simultaneously leading the Fund Development Committee. Her commitment to the Institute has helped grow the size and effectiveness of the board, led to a smooth leadership transition for the Executive Director, and guided the board and staff through an updated strategic plan. Her development expertise helped the Institute increase its budget,

including doubling individual giving, and has ensured the Institute will be a sustainable non-profit for years to come. ♥

EPISCOPAL CHARITIES OF RI



Reverend Noel Bailey

The Reverend Noel Bailey is a native Rhode Islander back for her fourth time living in the state. The last time she was here, 30 years ago, she became attracted to the work of Episcopal Charities of RI. When she moved back several years ago, she was pleased to be invited to join the board. She has been a strong advocate for Charities in the parishes she has served and has enjoyed visiting some of the agencies requesting grants. This has given her a deeper understanding of the wide scope of

needs in the state. ♥

2018 Partners in Philanthropy

FOSTER FORWARD



Meridian Custom Homes

The commitment of Meridian Custom Homes to Foster Forward and the children and youth we serve has been invaluable. They have generously supported all of Foster Forward's programs, including becoming personally involved in our Family Support and Real Connections programs. The team at

Meridian also works tirelessly in raising awareness for our organization. They foster compassion, normalcy and hope in everything they do and in the way that they do it. Perhaps what stands out the most is their humility through it all.

Foster Forward is grateful for their commitment and devotion to making the world a better place for the children, youth and families we serve! ♥

PARTRIDGE SNOW & HAHN LLP

Partridge, Snow and Hahn, LLP

Partridge, Snow and Hahn, LLP has been a tireless supporter of Foster Forward. Partner David Pellegrino provides leadership on Foster Forward's Board of Directors and currently serves as secretary. Additionally, PS&H has provided legal counsel to Foster Forward on governance, personnel and intellectual property issues, and is an annual sponsor for Foster Forward's gala. In addition, they have been advocates in expanding our philanthropic efforts. We are grateful for their dedication to our mission. ♥

GIRL SCOUTS OF SOUTHEASTERN NEW ENGLAND



Elsie Foy

We are proud to recognize Elsie Foy as our 2018 Partner in Philanthropy. Elsie has been a board member for nine years. She was a girl member for six years and has been an adult member of Girl Scouting for over 40 years. Elsie has also been a Girl Scout leader, trainer and a member of the Adult Recognition Committee, Finance Committee and Investment Committee. Elsie is the recipient of the Outstanding Leader Award and GSSNE's highest recognition, the Mira Hoffman Award. Elsie is also a member of GSSNE's planned giving society. GSSNE is proud to recognize Elsie. ♥

2018 Partners in Philanthropy

HIGHLANDER CHARTER SCHOOL



Dan Shedd

Dan Shedd and the entire team at Taylor Box Co. became part of the Highlander family four short years ago. Dan first joined the Golf Committee and quickly brought his team and our students together to develop an amazing relationship! Before long, students were visiting Taylor Box Co. as part of a course Dan developed, learning about running a successful business and meeting CEOs from local East Bay businesses. The Taylor Box team embodies the meaning of a Partner in Philanthropy, generously giving their time, talent and resources to provide Highlander students with a network of supporters and remarkable opportunities. ♥

HOPE HOSPICE & PALLIATIVE CARE RHODE ISLAND



Mayer and Judy Levitt

Mayer and Judy Levitt are a wonderful team in support of Hope Hospice. Mayer joined the Board of Directors in 2013 and Judy joined the Philanthropy Committee in 2015. Not only are they generous donors to Hope Hospice, but both are passionate advocates and have introduced others to the cause—others who have also become donors. Judy has taken a leadership role in fundraising for Hope Hospice's annual gala, and Mayer for the Hope Hospice Golf Invitational. We are so grateful to have their enthusiastic support. ♥

ISLAND MOVING COMPANY



John and Marisa LaRocca

It doesn't take a dance company to know it takes two to tango. "Whether we're about to make an ask or seating children at an educational matinee, there isn't much in life worth doing alone".

John LaRocca has served as Island Moving Company's Board Chair for five years and with him every step of the way is his charming and charismatic wife, Marisa. Together for 48 years, they are the tag team that are every nonprofit's dream. Through thick and thin, they've been with IMC making silent and live auctions work, emceeding galas, launching the organization's first capital campaign in 36 years of operation, and nearly doubling the budget to over one million annually. Thank you, Marisa and John, for showing us how it's done! ♥

2018 Partners in Philanthropy

JOHN E. FOGARTY FOUNDATION



Mary Fogarty McAndrew

Mary Fogarty McAndrew is the chairman of the Board of the Fogarty Foundation. She joined the Board in the 1980's to fundraise and continue the legacy of her father, Congressman John E. Fogarty, who established the Foundation in 1964 to fund programs that improve and enhance the lives of people with intellectual and developmental disabilities. Mary is a tireless volunteer and inspiration to the thousands of individuals with disabilities living in our state. As a leader, she instills hope, vision and passion for a cause that supports equal opportunities for individuals with disabilities to participate in all aspects of community living. ♥

THE MANTON AVENUE PROJECT



Elizabeth "Betty Ann" Hughson

Elizabeth "Betty Ann" Hughson volunteered with The Manton Avenue Project for several years on our gala planning committee, in our office maintaining our volunteer artist database, and as a front-of-house greeter at our play festivals. More than a donor and volunteer, Betty Ann was a friend. Betty Ann will be remembered for her kindness, thoughtfulness, and huge smile. She was such a positive force in Providence and will be missed by so many. ♥

MCAULEY MINISTRIES



Joan and Dennis Robbins

McAuley Village Philanthropy means love for humanity and no one epitomizes this more than Joan and Dennis Robbins. Through their family fund, the Egavian Foundation, Joan and Dennis have ensured that the residents have a computer center and a refurbished community room. They have transformed our office space into a true resource space for our program. Because of their generosity, our 28-year-old kitchens are being modernized. Supporting those in need is part of their very being as they scoop ice cream on hot summer nights, donate and set up holiday displays, and find furniture for those families who have none. Their commitment and generosity have been transformational to McAuley Village and we are so grateful for their support and friendship. ♥

2018 Partners in Philanthropy

MERCYMOUNT COUNTRY DAY SCHOOL



Cathy and Joe Pereira

Cathy and Joe Pereira have been beloved members of the Mercymount community since 2006, along with their children, Aidan and Marisa. They have volunteered in the lunchroom, classrooms, playing fields, student events, field trips, open houses, and at major fundraisers, such as the Auction and Color Run. Cathy and Joe have always prioritized our students' well-being in their dedication to Mercymount. Their level of support in charitable giving and enthusiastic care for our school has been astounding and very much appreciated. True stewards of Mercy, we love and thank you Cathy and Joe! ❤️

MOSES BROWN SCHOOL



Meg Clurman

When the youngest of Meg Clurman's three children graduates this spring, it will mark 16 years of devotion to the Moses Brown community. Known as a volunteer who always shows up when asked, Meg has served in nearly every way possible: as class representative, member of the Parents' Association Executive Committee, parent co-chair of The Moses Brown Fund, member of two Board committees, and voice of reason. Meg's positive spirit is motivating to all and her generosity is significant. We cannot thank her enough. ❤️



Gardner Lane

Gardner Lane is the epitome of commitment and service. From the moment he arrived at Moses Brown as a parent to two Lower School students, he has been generous with his time, his talent, and his tenacity. Whether selling sponsorships for the auction, raising funds as parent co-chair of the Moses Brown Fund, or serving as a Trustee, he has made an incredible impact in only six years. In addition to encouraging others to support Moses Brown, Gardner and his wife, Elizabeth, always lead the way, making a difference when it's most needed. ❤️

2018 Partners in Philanthropy

NEW URBAN ARTS

BOTTLES

fine wine | cocktails | craft beer

The Bottles Group

The Bottles Group has been an incredible philanthropic partner, enthusiastically embracing our mission and partnering with New Urban Arts to support our young people.

Over the past year, the Bottles Group has gone above and beyond, donating an enormous amount of time, food, and beverages for our fundraising events. For each event, Bottles staff members have worked alongside New Urban Arts staff, hosting and providing for our community of supporters. Bottles team members have been wonderful to work with and we're so lucky to partner with you. Thank you! ♥

NORMAN BIRD SANCTUARY

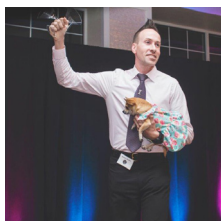


Tau Epsilon Phi (TEP) Fraternity at Johnson & Wales University

The Norman Bird Sanctuary (NBS) is proud to honor an extraordinary group of young men - the Tau Epsilon Phi (TEP) Fraternity at Johnson & Wales University. When NBS received a call from TEP a number of years ago wondering if we had volunteer opportunities, we were so grateful for their help. These inspiring individuals have contributed countless hours to our organization, from installing hundreds of bird boxes in our fields on a rainy day,

to helping with our long, hot Harvest Fair weekend. Regardless of the task, these young men show up with enthusiasm and a work ethic beyond compare. They are the embodiment of TEP's governing ideals of friendship, chivalry and service. ♥

POTTER LEAGUE FOR ANIMALS



Korey Morris

Korey Morris has volunteered with the Potter League for Animals since 2014 and has accumulated over 2,115 volunteer hours. It is well known that when Korey is on site he is BUSY. He's modeled for our Paws Up live auction, run errands to pick up last minute items for events, and has even cleaned out a storage unit. Almost daily he is either helping the development team, volunteering at outreach events, making deliveries of pet food for clients in need, transporting animals

for surgeries, or keeping us and our offices tidy and organized. We can't thank you enough, Korey, for all that you do for us! ♥

2018 Partners in Philanthropy

POTTER LEAGUE FOR ANIMALS



Lisa Hassett

The Potter League for Animals is proud to honor Lisa Hassett. Her passion for the Potter League began in 1997 when she sponsored our "Pet of the Week" ad in the Newport Daily News in memory of her beloved dog. Lisa has served two terms on our board of directors. She has also volunteered at our fundraising events and at our Wellness Clinics in underserved communities in Newport County. She is a friendly face to many, helping potential adopters by answering questions and helping animals find loving homes. Lisa - we are so grateful for all that you have done! ♥

PROVIDENCE CHILDREN'S MUSEUM



Matthew O. Littlefield

Since 2005, Matthew O. Littlefield has consistently demonstrated how much he values the Museum's work and has guided our course toward an exciting future. Matt was vice president of the board during our successful 2007 capital campaign, steered consecutive strategic plans, served two active terms as board president, and currently serves as immediate past president. In 2008, Matt and his wife, Susan, co-chaired the Museum's gala and continue to serve as Play Leaders or Hosts for this annual event. Matt's personal involvement, generosity, guidance and advocacy all show outstanding leadership toward helping the region's children and families to thrive. Thank you, Matt! ♥

PROVIDENCE PUBLIC LIBRARY



Dr. Kathleen Hittner

Dr. Kathleen Hittner has served on Providence Public Library (PPL)'s Board of Trustees since 2015, is a member of the Library's Conservator Society, and has supported PPL for almost 20 years. During her tenure on the Board, Dr. Hittner has been instrumental in helping to re-imagine PPL, and, through her participation in the Library's Development and Capital Campaign Committees, has been a driving force in growing the Library's fundraising efforts and making our \$25 million building transformation a reality. Dr. Hittner's passion, generosity, and sincerity is second-to-none. Simply put, PPL would not be where we are today without her. ♥

2018 Partners in Philanthropy

REFOCUS



June Rose

Should you visit Newport Creamery on Smith Street in Providence, you will most likely be asked to donate to the ReFocus Auction. Waitress and longtime friend of our executive director, June Rose, has contributed enormously to our agency. Every event we have hosted has been supported by our favorite Newport Creamery staff - from the Agency Family Picnic to our largest fundraiser, the Auction & Gala. June encourages all those she serves at the Creamery to support ReFocus and has gotten all the Newport Creamery regulars to support our worthy cause. ♥

RHODE ISLAND COLLEGE



Dr. Dorothy Mierzwa Pieniadz

Dr. Dorothy Mierzwa Pieniadz, a native of Buffalo, New York, served as the first dean of students from 1956 to 1969. Retired since 1987, Pieniadz has a long record of involving students with international education. In 2004, she established the Dorothy Mierzwa Pieniadz Endowed Scholarship Fund to express her devotion to higher education. Pieniadz has always stressed the importance of earning a degree. "Our children are our future. Without an education in this country, there is no future," said Pieniadz. Dorothy Mierzwa Pieniadz remains dedicated to the value of education and the spirit of helping others improve their lives. ♥

RHODE ISLAND FOUNDATION



Garry and Virginia Plunkett

Garry and Virginia Plunkett keep their philanthropy local as Rhode Island Foundation partners since 2007. They are founders of the Pocassetlands Stewardship Fund, which supports "trail maintenance, educational programs, signage, restoration from storms and other damage, and provides the public access to preserved lands to enjoy them," per Garry, a co-chair of the Town of Tiverton's Open Space/Land Preservation Commission. The Plunketts support the Rhode Island Foundation directly and have included the Foundation in their deferred and estate plans; they host gatherings, offer referrals, and attend our many events as true Rhode Island Foundation loyalists. We treasure the Plunkett's partnership! ♥

2018 Partners in Philanthropy

RI COMMUNITY FOOD BANK



Jacques Pépin Foundation

The Jacques Pépin Foundation supports individuals that seek and organizations that create pathways to success through culinary professionalism, skills and technique. It has supported the Food Bank's Community Kitchen culinary job training program by providing chef instructors, curricular materials and connections with kitchen equipment manufacturers. As the RI Community Food Bank celebrated its 20th Anniversary of Community Kitchen this past year, the JPF partnered in our fundraising event, bringing world-renowned chefs together to provide a multicourse dinner experience, hosted by Jacques Pépin, and helping us raise over \$195,000 for culinary education. ♥

RI PARENT INFORMATION NETWORK



Doctor's Choice and Dr. Johnny Luo

Doctor's Choice and Dr. Johnny Luo have supported the Rhode Island Parent Information Network (RIPIN) for the past three years. They are both financial supporters and partners with the RIPIN Consumer Call Center and RIREACH, the Rhode Island healthcare consumer help line. Dr. Johnny Luo has also volunteered his time to RIPIN by serving on the RIPIN Board of Directors and by serving RIPIN on the Fund Development Committee. RIPIN's mission of helping Rhode Islander's in need is highlighted by Dr. Johnny Luo's enthusiasm, passion, and commitment to RIPIN and the tens of thousands of families we serve each year! ♥

RIVMA COMPANION ANIMAL FOUNDATION (CAF)



Roberts, Carroll Feldstein and Pierce, Inc.

The law firm of Roberts, Carroll Feldstein and Pierce, Inc. (RCFP, Inc.) is a longtime supporter of both the Rhode Island Veterinary Medical Association (RIVMA) and its charitable arm, the RIVMA Companion Animal Foundation (CAF). Attorneys R. Kelly Sheridan and Elizabeth Suever provide high-quality service to the RIVMA on legislative issues. RCFP, Inc. has also sponsored the RIVMA CAF Golf Classic for the past 15 years and RIVMA CAF is grateful for the service of Elizabeth Suever as treasurer of the organization's Board of Directors. ♥

2018 Partners in Philanthropy

RONALD MCDONALD HOUSE

Centreville Bank.
Charitable Foundation

Centreville Bank Foundation

The Ronald McDonald House of Providence is proud to honor Centreville Bank Foundation

as a Partner in Philanthropy for their commitment to the families who call the Ronald McDonald House of Providence “home” during their child’s hospitalization. Acknowledging the mission of RMH Providence as an “Adopt a Room” sponsor, Centreville Bank Foundation continues to have a direct impact on families in medical crisis. Since our partnership began in 2016, RMH Providence has been able to provide services to over 600 families. Through the generosity of Centreville Bank Foundation and our “Adopt a Room” sponsors, we are able to serve all families in need of our programs. ♥

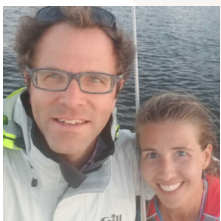
SAINT ELIZABETH COMMUNITY



Greg and Claire Wilcox

Saint Elizabeth Community is fortunate to have Greg and Claire Wilcox as friends. Greg and Claire have continued in the tradition of Greg’s parents, Everett and Priscilla, by providing leadership and support through philanthropy. Their vision, enthusiasm and desire to change lives through their philanthropy inspired others to join them in bringing the Green House Homes to Saint Elizabeth Home. Greg and Claire will have tremendous impact on those we serve for generations to come. We are grateful to have the opportunity to recognize this amazing couple. ♥

SAVE THE BAY



George Shuster, Jr. and Stephanie Van Patten

George Shuster, Jr. is a board member and head of the Facilities Committee for Save the Bay (STB), and George Shuster, Jr. & Stephanie Van Patten is a member of the Education Committee. Both have been involved for more than 10 years. They are also on the President’s Leadership Council and together they helped bring STB marine education to Warwick Public School fourth graders and implement climate change adaptation on Warwick bayside roads. Together they created “Pick Up Warwick,” a program to combat litter. Along with STB, George and Stephanie support several organizations through their contribution of funds, expertise, and their passion for all things Warwick. ♥

2018 Partners in Philanthropy

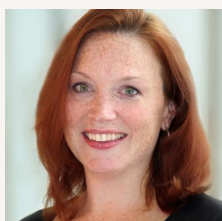
SCHOOL ONE



Ed Bishop

Ed Bishop is a longtime friend of School One and the education community. Most recently, he provided significant help to School One in negotiating the purchase of a nearby property, including underwriting a substantial donation. At 86 years young and a 1954 alumnus of Brown University, Ed is president and owner of E. F. Bishop Agency, E.F. Bishop Realty and Logee & Bishop Insurance. A U.S. Army Korean War veteran with extensive community service, Ed is also a founding and current board member of Blackstone Academy Charter School. School One is grateful for Ed's partnership. ❤️

SHRI SERVICE CORPS



Carolyn Belisle

Carolyn Belisle is a champion for mission-aligned programs that promote innovative approaches to creating healthier and more compassionate communities. For more than three years, Carolyn has accomplished this by investing in pilot programs at Shri, and she has provided a flexible working relationship which has allowed Shri to grow its impact. Carolyn is smart, resourceful, patient and passionate, and she recognizes how the Shri Yoga methodology is helping thousands of students of all backgrounds increase focus, reduce stress and gain greater flexibility - both physically and emotionally. Thanks to Carolyn, Shri has been able to grow in ways not possible without her continued support. ❤️

SISTERS OF MERCY

Kathryn Mancini, Paula Pais-Leach and Mary Smith



Kathryn Mancini, Paula Pais-Leach and Mary Smith have been supporting the mission of the Sisters of Mercy for many years. They have been collaborating to help make the Sister's annual Celebration of Mercy a success. For many years, they have worked diligently behind the scenes in helping present a spectacular fundraising event. From concept and solicitation, until the very last box is loaded into the car at the end of the evening, Kathryn, Paula and Mary have been the backbone of the planning committee. Respectively, they represent RGB Architects, Customers Bank and National Grid, and with their continued generosity of time, talent and treasure, the Sister's mission in the community continues to thrive. Congratulations and thank you, Kathryn, Paula and Mary! ❤️

2018 Partners in Philanthropy

THE TOMORROW FUND



Meridian Printing

The Tomorrow Fund is a small Rhode Island nonprofit that depends on the community for funding and support. Meridian Printing has been a crucial partner of our organization. We are eternally grateful for not only their extremely talented staff, but also for their unwavering in-kind support of our mission. This has allowed us to provide vital programs to every oncology child treated at Hasbro Children's Hospital and their family. We are blessed to have such an amazing partner. ♥

UMASS DARTMOUTH



Nelson Hockert-Lotz

Domino's franchise owner, Nelson Hockert-Lotz, has partnered with UMass Dartmouth Athletics for six years. Nelson believes student-athletes are role models for children in our surrounding communities who aspire to attend a great public university. He shares his personal message at our Domino's Student-Athlete of the Week Monthly Luncheons, recognizing the life lessons and values that intercollegiate athletics. His belief in the ideals of the NCAA Division III philosophy makes for a perfect partnership. His generosity has enhanced our fan attendance through strategic game-day promotions. We are honored by his commitment to significantly enhance the UMassD student-athlete experience. ♥

UNIVERSITY OF RHODE ISLAND FOUNDATION

Blue Cross Blue Shield of Rhode Island



The University of Rhode Island Foundation would like to recognize Blue Cross Blue Shield of Rhode Island for their partnership and investment in programs at the University. In particular, Carolyn

Belisle and her team have truly been a resource for our programs, like Rhode Island Food, Fitness and Fun, which helps to promote overall health and well-being for children in our community. We are so grateful for the support provided by BCBSRI and we look forward to our continued partnership into the future. ♥

National Philanthropy Day 2018

Committees

Event Co-Chairs Vernell Clouden, Sophia Academy
Katie McGwin, The University of Rhode Island Foundation

Event Committee Robyn Chapman, Brain Injury Association of Rhode Island
Erin O’Gara Dollard, Potter League for Animals
Jill Gonsalves, Rhode Island Community Food Bank
Amy Gravell, Boys & Girls Club of Pawtucket
Linda Hull
Wendy Ingram, Art Connection-RI
Shana Murrell, Becker College
Christine Pellegrini, UMass Dartmouth
Debra Sharpe, Brain Injury Association of Rhode Island

Awards & Herbert E. Kaplan Youth in Philanthropy Scholarship Committee

Co-Chair Lisa Desbiens, CFRE, The Providence Center
and VNA of Care New England

Co-Chair Jill Gonsalves, Rhode Island Community Food Bank
Doreen Tucker, Sisters of Mercy Northeast Community
C. Alexander Chiulli, Barton Gilman LLP
Mike Gianfrancesco, Foursight Graphics, LLC
Nancy Isabel, Plan International USA
Lisa Lydon, Mercymount Country Day School
Leah Macomber, CFRE, Consultant
Shana Murrell, Becker College

Videos produced by: Stu Giannini of G Media



JOIN THE ASSOCIATION OF FUNDRAISING PROFESSIONALS



DISCOVER CREATIVE IDEAS TO HELP YOUR FUNDRAISING CAREER GROW!

The Rhode Island Chapter offers...

- Networking with experienced practitioners
- Discounted education sessions
- Insights into local career opportunities
- Scholarships

FOR MORE INFORMATION, contact us at www.afpri.org.



CHANGE THE WORLD



WITH A GIVING HEART

**National
Philanthropy Day**

\$50 Professional or Associate New Member Discount!

In honor of National Philanthropy Day® AFP is offering a \$50 discount to new members joining in the Professional or Associate member categories by November 30, 2018!

Fill out the membership invitation as usual, but deduct \$50.00 from the total and include this coupon with your payment.*

Complete your application and send it in via mail or fax by November 30, 2018

**Coupon must be included with payment. One coupon per new member. Can also be redeemed online by using discount code NPD2018.*

Questions, call the AFP Membership Department at (800)666-3863.
AFP, 4300 Wilson Blvd. Ste. 300, Arlington, VA 22203 /Fax: 703-684-1950

Association of Fundraising Professionals, Rhode Island Chapter



BOARD OF DIRECTORS

Christine Pellegrini, MPA, CFRE	President
UMass Dartmouth	
Amy E. Gravell	President Elect
Boys & Girls Club of Pawtucket	
Erica L. Donnelly, CFRE	Past President
Care New England	Professional Development Chair
Patrick B. McAssey, CPA	Treasurer
BlumShapiro	
Michael Gianfrancesco	Governance Chair
Foursight Graphics, LLC	Awards & Scholarship Co-Chair
Vernell Clouden	National Philanthropy Day Co-Chair
Sophia Academy	
Gerri L. Manning	Secretary and Membership Chair
Saint Elizabeth Community	
Kelly Nevins	Government Relations Chair
Women's Fund of Rhode Island	Diversity and Equity Chair
Marissa Tuccelli	Marketing Chair
Boys & Girls Clubs of Northern Rhode Island	

Joining a committee of AFP Rhode Island is an excellent opportunity to network and work with others interested in promoting philanthropy. Please contact us at info@afpri.org if you are interested in joining one of our Committees.

Past National Philanthropy Day Award Recipients

Outstanding Philanthropic CORPORATION

2017 The Claflin Company
2016 Ocean State Job Lot
2015 ALEX AND ANI
2014 Taco, Inc.
2013 Gregg's Restaurants & Pubs
2012 Blue Cross & Blue Shield of Rhode Island
2011 Stop & Shop
2010 Amica Insurance
2009 Swarovski North America Limited
2008 Bank of America
2007 Edwards Angell Palmer & Dodge LLP
2006 Collette Vacations
2005 Whole Foods Market
2004 BankRI
2003 The Washington Trust Company
2002 WJAR/NBC10
2001 CVS/pharmacy
2000 Verizon
1999 BankBoston
1998 Textron, Inc.
1997 Fleet
1996 Citizens Bank
1995 The Providence Journal Company
1994 Hasbro, Inc.

Outstanding Philanthropic BUSINESS

2017 Gracie's Venture
2016 Delta Dental of Rhode Island
2015 Barton Gilman LLP
2014 Coastway Community Bank
2013 Seven Stars Bakery
2012 Performance Physical Therapy
2011 Centreville Bank
2010 Koch Eye Associates
2009 Cat Country 98.1 WCTK-FM
2008 Lefkowitz, Garfinkel, Champi & DeRienzo PC
2007 Pinnelli-Marra Group
2006 RI Monthly Communications
2005 Duffy & Shanley
2004 WPMZ Poder 1110AM
2002 Pawtucket Red Sox
2001 East Side Marketplace

Outstanding Philanthropic CITIZEN

2017 Kate and Howard Kilguss
2016 Alfred J. Verrecchia
2015 Suzanne Magaziner
2014 James A. Hopkins
2013 Carol A. Peterson
2012 Brenda & Raymond "Chip" Bolster
2011 Louis Marciano
2010 Joan Abrams
2009 Constance Worthington
2008 Marjorie Brightman Catanzaro
2007 Arthur Robbins
2006 Gary St. Peter*
2005 Barbara Stillman
2004 Maxwell Mays*
2003 Simone P. Joyaux, ACFRE
2002 Herman Rose
2001 Herbert E. Kaplan*
2000 Mr.* & Mrs. Henry D. Sharpe, Jr.
1999 Guy Abelson*
1998 Mr.* & Mrs.* John Hazen White, Sr.
1997 The Russell A. Boss Family
1996 Mr.* & Mrs. Malcolm G. Chace
1995 Alan Shawn Feinstein
Carol McGovern, RSM awarded posthumously
1994 Alperin/Hirsch Family
1992 Norman* and Rosalie* Fain
1991 Mary Ann Lippitt*
1990 G. Dickson Kenney*
1989 The Goddard Family, George Miller
1988 Charles E. Gleadov, Jr.* and John W. Wall*
1987 William Heisler, III
1986 Bayard Ewing*
1985 Thomas P. I. Goddard
1984 Roger P. Braman*
1983 Allen H. Howland*
1982 Joseph W. Ress*

Special Recognition

Outstanding Philanthropic Service to the Community
2009 Karen Adams

**Deceased*

Herbert E. Kaplan Youth in Philanthropy Scholarship

Every year one Rhode Island high school senior is recognized for his or her commitment to volunteer and philanthropic efforts and presented with the \$2,500 Herbert E. Kaplan Youth in Philanthropy college scholarship.

Last November China Yang was presented with this scholarship in recognition for co-founding a food pantry at the Juanita Sanchez Educational Complex in Providence. Because of her efforts, students facing food insecurity receive backpacks stuffed with nourishing food.

When the 2018 scholarship recipient walks up on stage today, I hope you will take pride in knowing that your gift is building a brighter tomorrow for a student who is making Rhode Island a better place today.

We heard from China as she was about to begin her first semester at Providence College. China told us how excited she is for what lies ahead and described her gratitude for the opportunity to achieve her dreams. "Receiving this scholarship gave me hope that I can afford college. Coming from a low-income family, college was always a dream but not always an option. Even though my scholarship was a small amount to some, it helped a lot with my financial aid."



By supporting the Herbert E. Kaplan Youth in Scholarship, you make the dreams of future scholarship recipients a reality. On your table you will see a box to make a cash donation. You can also donate online using the QR code that's printed on the collection box as well as on this page.

When the 2018 scholarship recipient walks up on stage today, I hope you will take pride in knowing that your gift is building a brighter tomorrow for a student who is making Rhode Island a better place today.

Thank you for your generous support of the Herbert E. Kaplan Youth in Philanthropy college scholarship!



Donate today!

Get involved! Volunteer with AFP!

AFP-RI is governed by a volunteer board of directors. The AFP-RI Board of Directors oversees a range of planning committees that carry out the important work of our Chapter.

AWARDS AND SCHOLARSHIPS COMMITTEE

The Awards and Scholarships Committee reviews applications for AFP-RI's professional development and conference scholarships, as well as nominations for our Chapter's National Philanthropy Day Awards. This committee also solicits scholarship applications from Rhode Island high school students and selects one recipient annually to receive the Herbert E. Kaplan Youth in Philanthropy Scholarship.

DIVERSITY & INCLUSION COMMITTEE

The Diversity & Inclusion Committee creates, implements and monitors the chapter's diversity and inclusion goals and objectives, and ensures that diversity and inclusion is incorporated into all aspects of the chapter's operations.

PROFESSIONAL DEVELOPMENT COMMITTEE

The Professional Development Committee plans and organizes educational and networking opportunities throughout the year for AFP-RI Chapter members and others working in the fundraising sector. The focus of the committee is to plan and execute events that address current trends in fundraising as well as issues that affect the local fundraising community.

GOVERNMENT RELATIONS COMMITTEE

The Government Relations Committee has a primary role to educate members regarding public policy issues which impact nonprofits. The committee will lead engagement with government

officials, especially those holding elected office in Rhode Island to support ethical fundraising and donors' rights.

MARKETING COMMITTEE

The Marketing Committee works to promote awareness of AFP-RI, National Philanthropy Day, AFP-RI educational programs and networking events, and the accomplishments of our members within the Rhode Island and southeastern Massachusetts communities through digital marketing and social media.

MEMBERSHIP COMMITTEE

The Membership Committee develops and implements strategies to identify and recruit new members and retain existing ones. The Membership Committee conducts outreach to prospective members by mail, e-mail, phone, and in person. Together with the Professional Development Committee, we meet throughout the year to plan programs that will benefit Chapter members including networking breakfasts, a holiday gathering and an annual meeting.

NATIONAL PHILANTHROPY DAY COMMITTEE

This committee plans and executes the state's premier event celebrating philanthropy, with nearly 500 attendees. The National Philanthropy Day committee secures corporate sponsorships, coordinates marketing and outreach efforts, produces event collateral including a program book, and manages all event logistics.

**For more information or to volunteer,
please contact AFP-RI at info@afpri.org**

Association of Fundraising Professionals
Rhode Island Chapter
c/o Patrick McAssey
BlumShapiro
1 Capital Way
Cranston, RI 02910

www.afpri.org

info@afpri.org

401.267.8086



@AFPRIChapter



#NPD2018